

Nrf2 (R370G) Rabbit mAb

CatalogNo: AR0002 **Recombinant FSS™**

•Main information

Target	Nrf2
Reactivity	Human,Mouse,Rat
Applications	WB,IHC,IF,IP,ELISA
MW (kDa)	68kD (Calculated) 100kD (Observed)
Host Species	Rabbit
Isotype	IgG,Kappa

•Recommended Dilutions

IHC 1:1000-1:5000
WB 1:2000-1:10000
IF 1:200-1:1000
ELISA 1:5000-1:20000
IP 1:50-1:200
Note: For IHC, we suggest antigen retrieval with TE buffer pH 9.0 (Cat#RH0011)

•Detailed information

Specificity	Endogenous
Storage	-15°C to -25°C/1 year(Do not lower than -25°C, Ship by ice bag)
Formulation	PBS, 50% glycerol, 0.05% Proclin 300, 0.05%BSA
Purification	Protein A
Clonality	Monoclonal
Clone Number	R370G

•Target Information

Gene name	NFE2L2 NRF2
Protein Name	Nuclear factor erythroid 2-related factor 2 (NF-E2-related factor 2) (NFE2-related factor 2) (HEBP1) (Nuclear factor, erythroid derived 2, like 2)

Organism	Gene ID	UniProt ID
Human	4780;	Q16236;
Mouse	18024;	Q60795;
Rat	83619;	Q54968;

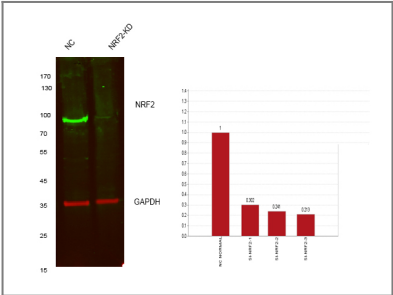
Cellular Localization	Cytoplasmic, Nuclear
------------------------------	----------------------

Tissue specificity	Widely expressed. Highest expression in adult muscle, kidney, lung, liver and in fetal muscle.
---------------------------	--

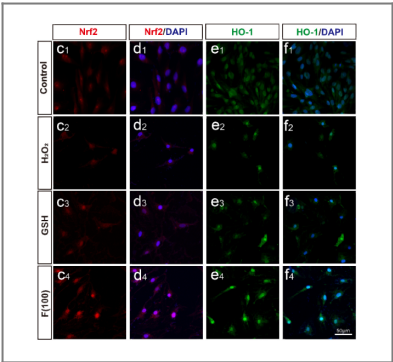
Function

Domain:Acidic activation domain in the N-terminus, and DNA binding domain in the C-terminus.,Function:Transcription activator that binds to antioxidant response (ARE) elements in the promoter regions of target genes. Important for the coordinated up-regulation of genes in response to oxidative stress. May be involved in the transcriptional activation of genes of the beta-globin cluster by mediating enhancer activity of hypersensitive site 2 of the beta-globin locus control region.,PTM:Phosphorylation of Ser-40 by PKC in response to oxidative stress dissociates NFE2L2 from its cytoplasmic inhibitor KEAP1, promoting its translocation into the nucleus.,similarity:Belongs to the bZIP family.,similarity:Belongs to the bZIP family. CNC subfamily.,similarity:Contains 1 bZIP domain.,subcellular location:Cytosolic under unstressed conditions, translocates into the nucleus upon induction by electrophilic agents.,subunit:Heterodimer. May bind DNA with an unknown protein. Interacts with KEAP1. Interacts via its leucine-zipper domain with the coiled-coil domain of PMF1.,tissue specificity:Widely expressed. Highest expression in adult muscle, kidney, lung, liver and in fetal muscle.,

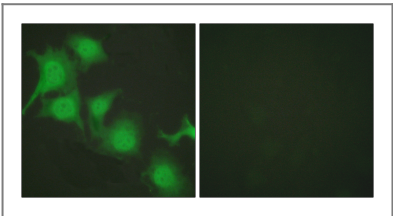
•Validation Data

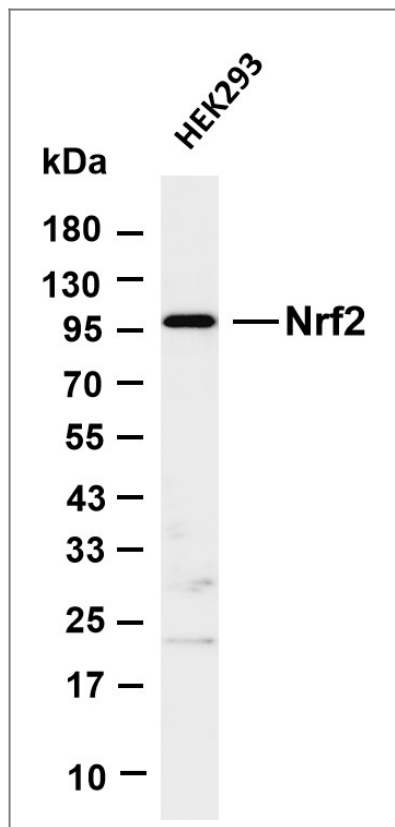


Western blot analysis of lysates from 1)Hela cell , 2)Hela cells knockdown by NRF2-siRNA (F:CAUUGAUGUUUCUGAUCUATT,R:UAGAUCAGAAACAUCAAUGTT), (Green) primary antibody was diluted at 1:1000, 4°C over night, Dylight 800 secondary antibody was diluted at 1:10000, 37°C 1hour. (Red) GAPDH Monoclonal Antibody antibody was diluted at 1:5000 as loading control, 4°C over night, Dylight 680 secondary antibody was diluted at 1:10000, 37°C 1hour.



Fullerenol rescues the light-induced retinal damage by modulating Müller glia cell fate. Redox Biology Haiwei Xu MIO-M1 cell





Various whole cell lysates were separated by 4-20% SDS-PAGE, and the membrane was blotted with anti-Nrf2 antibody. The HRP-conjugated Goat anti-Rabbit IgG(H + L) antibody was used to detect the antibody. Lane 1: HEK293 Predicted band size: 68kDa Observed band size: 100kDa

•Contact information

Orders: order@lamarck.cn
Support: support@lamarck.cn
Telephone: 400-801-6722
Website: <http://www.Lamarck.com>
Address: All rights reserved ©2025 Lamarck.



Please scan the QR code to access additional product information:
Nrf2 (R370G) Rabbit mAb

For Research Use Only. Not for Use in Diagnostic Procedures.

[Antibody](#) | [ELISA Kits](#) | [Protein](#) | [Reagents](#)